

# 790A WET USE CHOPPED STRANDS

FOR GYPSUM WALLBOARD APPLICATIONS



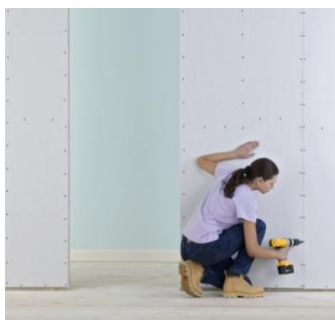
## DESCRIPTION

- **790A** wet used chopped strands (WUCS) are composed of Advantex® glass, which have been coated with an engineered chemical sizing and cut to ½” length.
- The Advantex® glass combines the excellent mechanical and electrical properties of traditional E-Glass and E-CR Glass.
- Advantex® glass is a boron/fluorine-free glass that reduces environmental footprint at the manufacturing site vs. Typical E-glass technology.

## BENEFITS<sup>1</sup>

- Enhances resistance to stress or load
- Stabilize the gypsum matrix under fire load (<0.1% surface cracking under fire load)<sup>1</sup>
- Improved stiffness for lightweight board (+28% flexural strength improvement)<sup>1</sup>
- Uniform glass dosage rate and dispersion

<sup>1</sup> The values for glass reinforced vs. non glass reinforced wallboard were from a study by an external lab commissioned by Owens Corning for benchmark testing in 2011



## APPLICATIONS

Typical application is for gypsum wall board reinforcement core reinforcement. 790A WUCS provides extended fire ratings for fire rated board plus improved flexural strength for standard and high impact strength boards.

790A WUCS are typically used for lower feed rate processes in "dry feed" applications.



# 790A CHOPPED STRANDS

FOR GYPSUM WALLBOARD APPLICATIONS

## MECHANICAL PROPERTIES

Property	Advantex® Glass	Traditional E-glass
Softening Point (°C)	916°C	850 – 870°C

Product nomenclature Sizing – Diameter	Chop Length available (in)	Moisture content (%)			Solids Content (%)			Fiber Diameter (Microns)		
		LSL	Nom	USL	LSL	Nom	USL	LSL	Nom	USL
790A	½"	5.0	6.5	8.0	.16	.20	.24	14.4	16.0	17.6

## TECHNICAL CHARACTERISTICS (nominal values)

The label will identify the material to be Advantex® glass fiber. All material is produced with equipment designed in Imperial Units (inches). The table below lists the Imperial and metric units with label identification.

Imperial Chop Length (inches)	Metric Chop Length
½"	12 mm

## PACKAGING

Typical packaging is a 907 kg conical bottom super-sack. For product protection, the bag is shipped inside a bulk corrugated carton, and unitized for load stability. Contact Sales representative for exact packaging to match your need.

## STORAGE

790A products are packaged and sealed to retain moisture in storage. Product should be used in a FIFO basis.

### Americas

Owens Corning  
Composite Materials, LLC.  
One Owens Corning Parkway  
Toledo, Ohio 43659  
1.800.GET.PINK™

### Europe

European Owens Corning  
Fiberglas Sprl.  
166 Chaussée de la Hulpe  
B-1170 Brussels  
Belgium  
+32 2 674 8211

### Asia Pacific

Owens Corning Shanghai Regional Headquarters  
40F, Pudong Kerry Parkside,  
1155 Fang Dian Road,  
Shanghai, 201204, China  
+86-21-6101 9666

This information and data contained herein is offered solely as a guide in the selection of reinforcement. The information contained in this publication is based on actual laboratory data and field test experience. We believe this information to be reliable, but do not guarantee its applicability to the user's process or assume any responsibility or liability arising out of its use or performance. The user agrees to be responsible for thoroughly testing any application to determine its suitability before committing to production. It is important for the user to determine the properties of its own commercial compounds when using this or any other reinforcement. Because of numerous factors affecting results, we make no warranty of any kind, express or implied, including those of merchantability and fitness for a particular purpose. Statements in this publication shall not be construed as representations or warranties or as inducements to infringe any patent or violate any law safety code or insurance regulation. Owens Corning reserves the right to modify this document without prior notice.  
© 2016 Owens Corning. All Rights Reserved.

Pub number: 10021557. WUCS\_790A product sheet\_us\_09-2016\_Rev0\_EN. September 2016

[WUCS@owenscorning.com](mailto:WUCS@owenscorning.com)

[www.composites.owenscorning.com](http://www.composites.owenscorning.com)